

EPICA

MultiPathing



About EPICA MultiPathing

This software package is EPICA multi-path I/O driver for Microsoft Windows Server 2003. The driver is built with Microsoft MPIO DDK 1759

Supported EPICA Storage Systems

EP-3169D-F4S3

Default Settings

Dual path ACTIVE/ACTIVE with round robin load-balance.

Architecture

32bit and 64bit

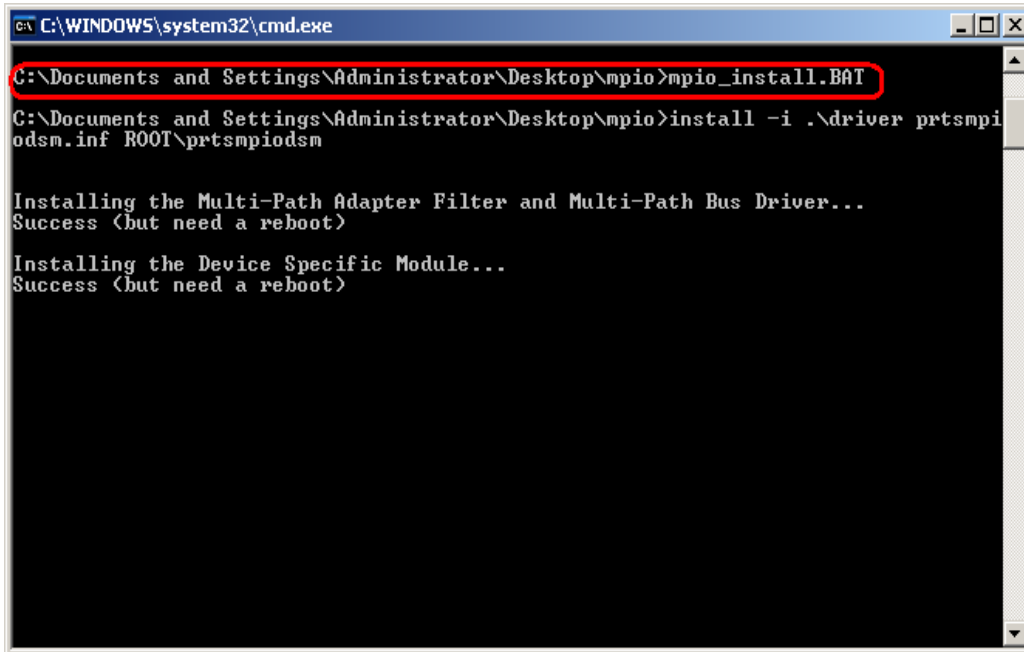
Supported Operating System

Microsoft Windows Server 2003 32bit

Solaris, Linux: This UNIX based operating system has fully integrated multipathing feature on there I/O core framework. More explanation below:

Installation Instructions

- 1) Extract the driver package
- 2) Double click : mpio_install.bat



```
C:\WINDOWS\system32\cmd.exe
C:\Documents and Settings\Administrator\Desktop\mpio>mpio_install.BAT
C:\Documents and Settings\Administrator\Desktop\mpio>install -i .\driver prtsmpi
odsni.inf ROOT\prtsmpiodsm

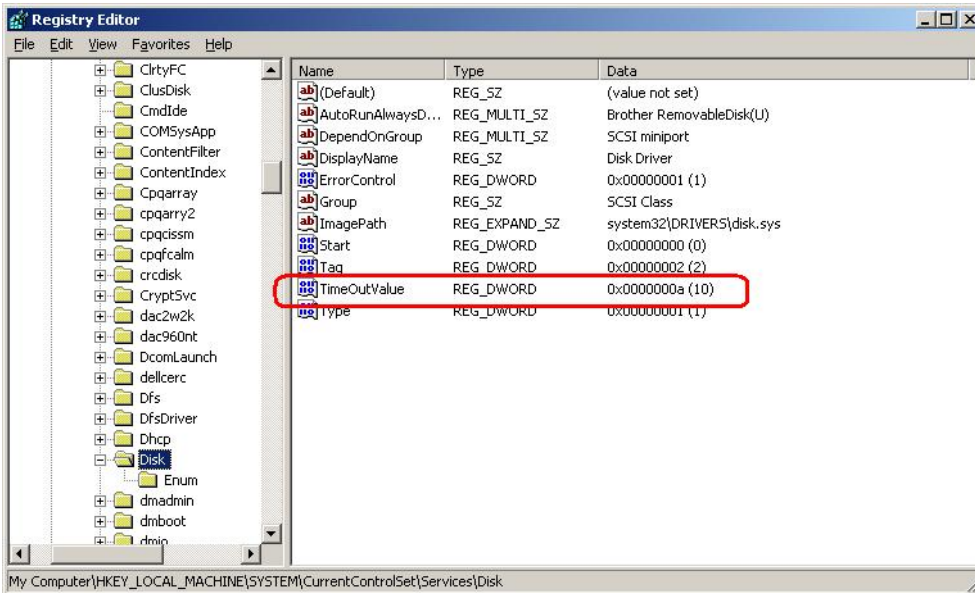
Installing the Multi-Path Adapter Filter and Multi-Path Bus Driver...
Success (but need a reboot)

Installing the Device Specific Module...
Success (but need a reboot)
```

When Security Alert box pop up, click YES to continue install the driver.

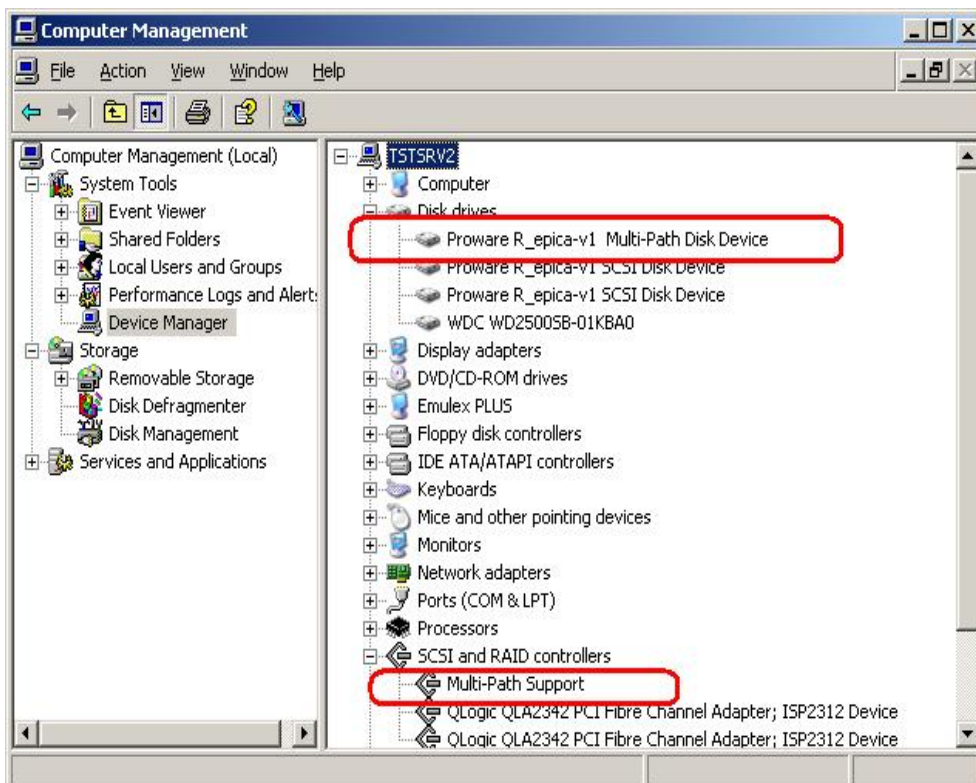


3) After installation is complete, reduce the disk timeout value on the registry :
HKEY_LOCAL_MACHINE\System\CurrentControlSet\Services\Disk\TimeOutValue to 10 decimal or a Hex



4) Reboot system

5) Verify Disk and SCSI Multi Pathing Support Devices are properly installed



6) Verify Disk Management if the two disk are united into ONE Path.

The screenshot shows the Windows Computer Management console. The 'Disk Management' section is expanded, showing details for Disk 0 and Disk 1. A red box highlights the 'New Volume (Z:)' entry under Disk 1, which is a simple volume of 133.18 GB NTFS, indicating that two disks have been united into a single path.

Volume	Layout	Type	File System	Status	Capacity	Free Space	% Free	Fault Tol
(C:)	Partition	Basic	NTFS	Healthy (System)	19.53 GB	10.65 GB	54 %	No
(D:)	Partition	Basic	NTFS	Healthy	19.53 GB	15.62 GB	79 %	No
(E:)	Partition	Basic	NTFS	Healthy	19.53 GB	16.30 GB	83 %	No
(F:)	Partition	Basic	NTFS	Healthy	18.55 GB	15.35 GB	82 %	No
New Volume (Z:)	Simple	D...	NTFS	Healthy	133.18 GB	133.01 GB	99 %	No
SINESUGBO (H:)	Partition	Basic	NTFS	Healthy	125.45 GB	56.38 GB	44 %	No
WINSRV (G:)	Partition	Basic	FAT32	Healthy	9.76 GB	5.14 GB	52 %	No

Volume	Layout	Type	File System	Status	Capacity	Free Space	% Free	Fault Tol
(C:)	Partition	Basic	NTFS	Healthy (S)	19.53 GB	10.65 GB	54 %	No
(D:)	Partition	Basic	NTFS	Healthy	19.53 GB	15.62 GB	79 %	No
(E:)	Partition	Basic	NTFS	Healthy	19.53 GB	16.30 GB	83 %	No
(F:)	Partition	Basic	NTFS	Healthy	18.55 GB	15.35 GB	82 %	No
18.55 GB	Healthy (U)							
1.95 GB	Healthy							
9.77 GB	Healthy							
125.45 GB	Healthy							