

# **SAS to SAS/SATA JBOD Subsystem**

## **User Manual**

**Revision 1.1**

# Table of Contents

<b>Chapter 1 Introduction.....</b>	<b>3</b>
1.1 Features.....	4
1.2 Technical Specifications.....	5
1.3 Unpacking the JBOD Expansion Chassis .....	6
1.4 Identifying Parts of the Expansion Chassis .....	7
1.4.1 Front View .....	7
1.4.2 Rear View.....	8
1.4.3 JBOD Controller Module .....	9
1.4.3.1 JBOD Controller Panel.....	9
1.5 Power Supply / Fan Module (PSFM).....	10
1.5.1 PSFM Panel.....	10
1.5.2 Power Supply Module LED.....	11
1.5.3 Fans of PSFM .....	11
1.6 LCD Display Panel.....	12
1.6.1 LCD Panel LED.....	12
1.6.2 LCD Panel Function Buttons.....	13
1.6.3 Menu Diagram .....	14
1.7 Drive Carrier Module .....	15
1.7.1 Disk Drive Status Indicators.....	15
1.7.2 Drive Carrier Lock Indicator .....	16
<b>Chapter 2 Installation of JBOD Subsystem.....</b>	<b>17</b>
2.1 Powering On .....	17
2.2 Disk Drive Installation.....	18
2.2.1 Installing Disk Drive in a Disk Tray.....	18
2.2.2 Installing a SATA Disk Drive (Dual Controller Mode) in a Disk Tray.....	21
2.3 Connecting the JBOD Subsystem.....	25
2.3.1 Connecting to SAS HBA.....	25
2.3.2 Connecting to RAID Subsystem.....	25
<b>Chapter 3 JBOD Firmware Upgrade.....</b>	<b>26</b>
Upgrading Firmware.....	26

## Chapter 1 Introduction



### The Expansion Chassis

The JBOD subsystem is a 19-inch 3U rackmount JBOD unit. It features the latest SASII (6Gb/s) interface and designed to fit in with the environments which needed highly reliable and relentless data growth. The JBOD subsystem is also a versatile SAS2/SATA3 disk expansion system, ideal for high capacity and scalability storage in IT demands. Based on the 6G SAS technology, the JBOD subsystem supports the choice of SAS2 and SATA3 drive configurations to deliver the best cost-performance index with higher bandwidth.

## 1.1 Features

### Highest Density Available

- 3U chassis with 16 bays carriers
- Support the 2.5" / 3.5" enterprise class SAS2 / SATA3 disk drives

### High Availability

- Single or dual SAS JBOD controller module
- Each SAS JBOD controller module consist of three 4x mini SAS ports

### Power Supply

- Power supply and cooling system contained in 1 module for efficient cooling
- Two 500W redundant hot swappable power supplies

### Enclosure

- Incorporates a cableless design for maximum signal integrity

### SES

- Utilizes industry-standard SCSI enclosure services to monitor enclosure and disk environmental conditions

### Enclosure monitoring

- S.E.S. support for standard enclosure management
- System LED indications
- Fan speed monitoring
- Power supply monitoring
- System voltage monitoring
- System temperature monitoring
- System alarm

## 1.2 Technical Specifications

<b>RAID Controller</b>	JBOD
<b>JBOD Controller</b>	Single / Redundant
<b>Host Interface</b>	One / Two 4x mini SAS (6Gb/s)
<b>Disk Interface</b>	6Gb/s SAS, 6Gb/s SATA
<b>SAS expansion</b>	Two / Four 4x mini SAS (6Gb/s)
<b>Enclosure</b>	
<b>Platform</b>	Rackmount
<b>Form Factor</b>	3U
<b># of Hot Swap Trays</b>	16
<b>Disk Status Indicator</b>	Access / Fail LED
<b>Backplane</b>	6Gb/s SAS / SATA BP
<b># of PS/Fan Modules</b>	500W x 2 w/PFC
<b># of Fans</b>	4
<b>Power requirements</b>	AC 90V ~ 264V Full Range, 10A ~ 5A, 47Hz ~ 63Hz
<b>Environmental</b>	
<b>Relative Humidity</b>	10% ~ 85% Non-condensing
<b>Operating Temperature</b>	10°C ~ 40°C (50°F ~ 104°F)
<b>Physical Dimension</b>	590(L) x 482 (W) x 131(H) mm
<b>Weight (Without Disk)</b>	24 / 25 Kgs

*Specification is subject to change without notice.*

*All company and product names are trademarks of their respective owners.*

## 1.3 Unpacking the JBOD Expansion Chassis

The shipping package contains the following:

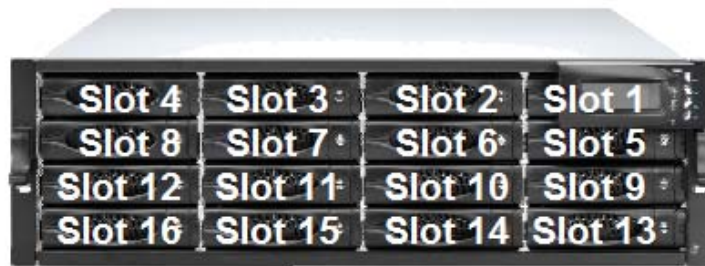
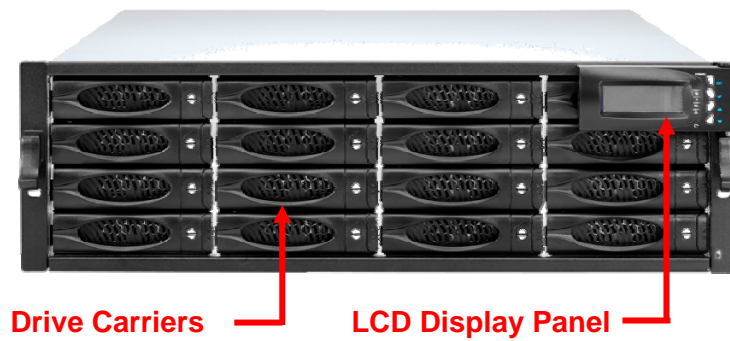
	JBOD Subsystem Unit
	Two (2) power cords
	One (1) serial cable for single JBOD controller Two (2) serial cables for dual JBOD controllers
	One (1) mini SAS cable for single JBOD controller Two (2) mini SAS cables for dual JBOD controllers
	One (1) Ethernet LAN cable for single JBOD controller Two (2) Ethernet LAN cables for dual JBOD controllers
	One(1) JBOD Controller Blanking Plate Note: For dual JBOD controllers
	One(1) PSFM Plate Cover
	User Manual

**NOTE:** If any damage is found, contact the dealer or vendor for assistance.

## 1.4 Identifying Parts of the Expansion Chassis

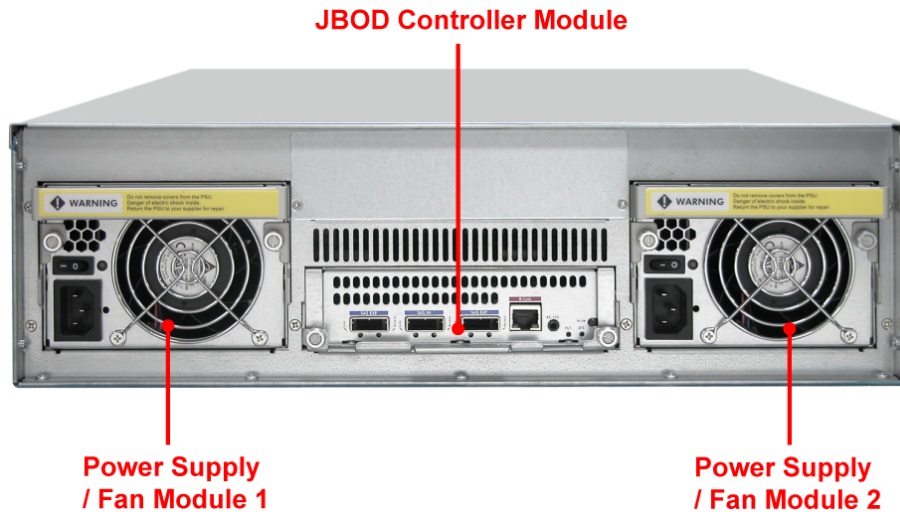
The illustrations below identify the various parts of the expansion chassis.

### 1.4.1 Front View

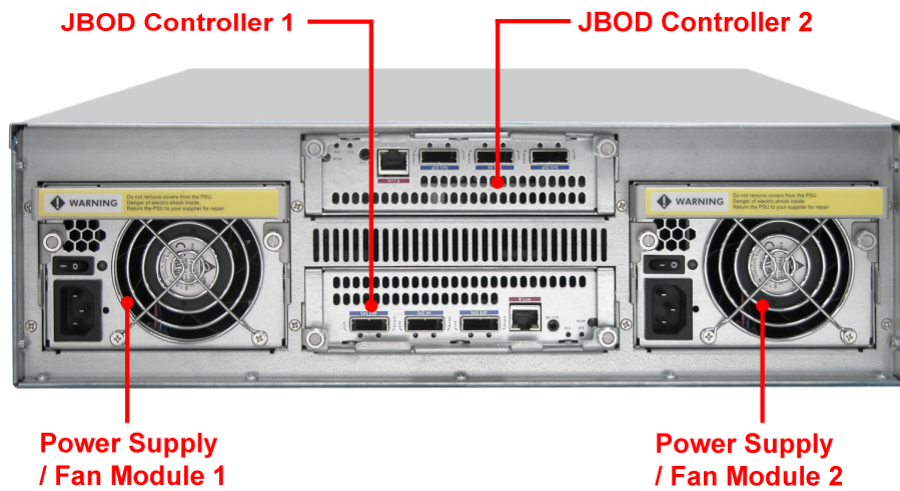


## 1.4.2 Rear View

### Single Controller



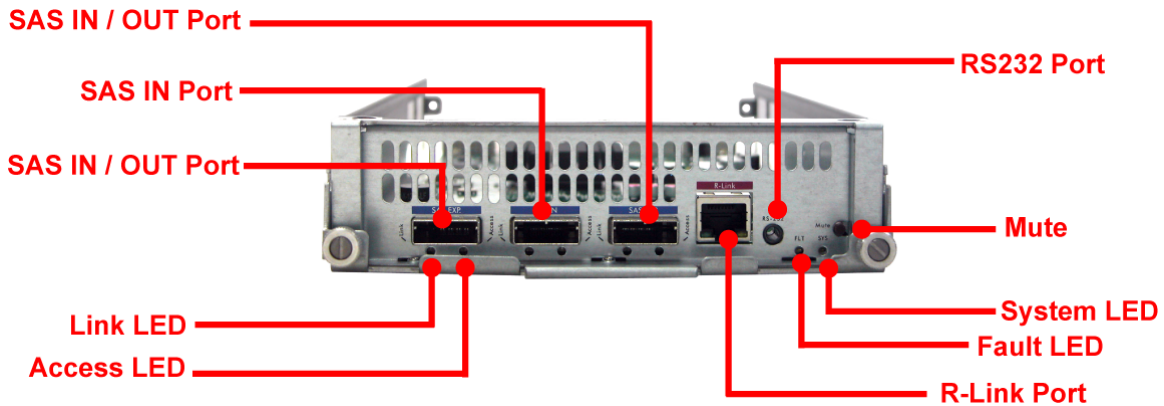
### Dual Controller





### 1.4.3 JBOD Controller Module

#### 1.4.3.1 JBOD Controller Panel



**NOTE:** SAS IN/OUT Port can be flexibly configured as either SAS IN PORT or SAS OUT PORT by customer's request

**SAS IN Port:** SAS cable must be connected to this port and to the SAS HBA, or other Expansion Chassis's SAS Expansion Port, if this chassis is connected in daisy-chain.

**SAS OUT Port:** SAS cable must be connected to these ports and to other SAS IN Port of other expansion chassis for daisy-chaining.

**Link LED (SAS IN and SAS OUT):** Green indicates SAS IN/OUT Port has connected or linked.

**Access LED (SAS IN and SAS OUT):** Blue indicates SAS IN/OUT Port is being accessed.

**RS-232 Port:** Used for upgrading the Firmware of JBOD controller in the Expansion Chassis.

**Mute:** Use this button to silence the alarm beeper. If another failure event happens, the alarm beeper will sound again and this button can be pressed again to silence alarm.

**System LED:** Green indicates Expansion Chassis is Powered On and Ready.

**Fault LED:** Red (LED is on) indicates there is problem within the Expansion Chassis. If LED is off, the Expansion Chassis is in normal condition.

**R-Link Port:** Use to connect to Telnet for upgrading the Firmware of JBOD controller

## 1.5 Power Supply / Fan Module (PSFM)

The JBOD subsystem contains **two 500W Power Supply / Fan Modules**. All PSFMs are inserted into the rear of the chassis.



### 1.5.1 PSFM Panel



The Power Supply/Fan Module panel has: Power On/Off Switch, the AC Inlet Plug, and a Power On/Fail Indicator showing the Power Status LED, indicating ready or fail.

Each fan within a PSFM is powered independently of the power supply within the same PSFM. So if the power supply of a PSFM fails, the fan associated with that PSFM will continue to operate and cool the enclosure.

### 1.5.2 Power Supply Module LED



When the power cord connected from main power source is inserted to the AC Power Inlet, the power status LED becomes **RED**. When the switch of the PSFM is turned on, the LED will turn **GREEN**. When the Power On/Fail LED is **GREEN**, the PSFM is functioning normally.

### 1.5.3 Fans of PSFM

Each PSFM has 2 fans: Master Fan and Slave Fan.  
The Master Fan is located beside the PSFM panel.  
The Slave Fan is located in the rear side.

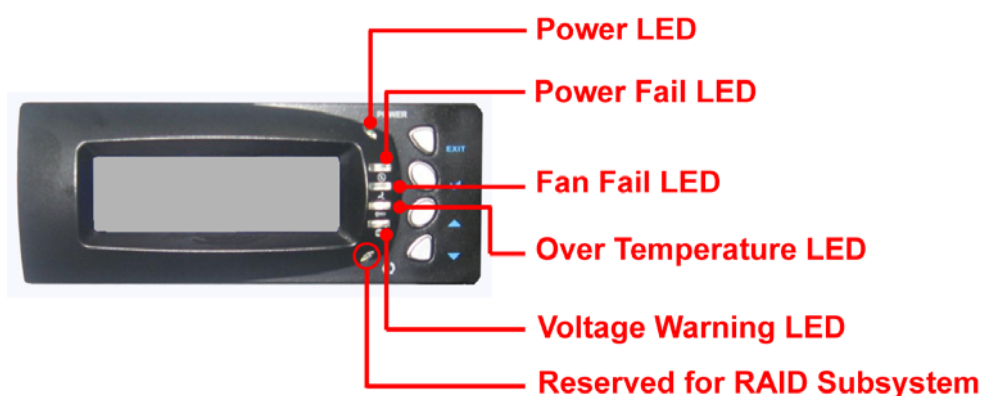






**NOTE:** In the LCD display, Master Fan of Power Supply Unit 1 is shown as "Fan01", and Slave Fan of Power Supply Unit 1 is shown as "Fan03". Master Fan of Power Supply Unit 2 is "Fan02" and Slave Fan of Power Supply Unit 2 is "Fan04".

## 1.6 LCD Display Panel



### 1.6.1 LCD Panel LED



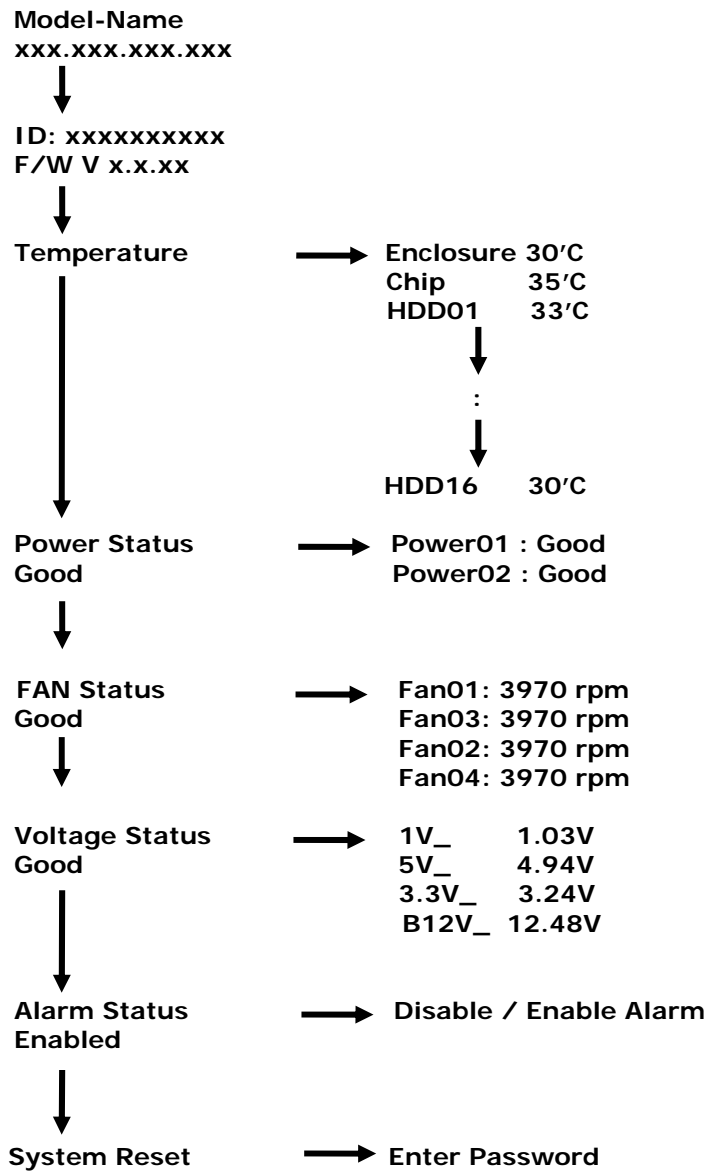
Parts	Function
Power LED	Green indicates power is ON.
Power Fail LED 	If one of the redundant power supply unit fails, this LED will turn to RED and alarm will sound.
Fan Fail LED 	Turn RED when fan 1 or 2 fails, or speed is lower than 3000 RPM for Master Fan and 2500 RPM for Slave Fan.
Over Temperature LED 	If system temperature is over 70°C or disk temperatures exceed 55°C, the Over Temperature LED will turn RED and alarm will sound.
Voltage Warning LED 	An alarm will sound if detected voltage in the controller is abnormal and LED will turn RED.

## 1.6.2 LCD Panel Function Buttons



Parts		Function
Up and Down Arrow buttons	▲ ▼	Use the Up or Down arrow keys to go through the information on the LCD screen. This is also used to move between each menu.
Select button	✓	This is used to enter the option you have selected.
Exit button	EXIT	<p>Press this button to return to the previous menu.</p> <p><b>NOTE:</b> This button can also be used to silence the alarm beeper when in main menu. If you are in submenu and a failure event happens, press the EXIT button few times as necessary to go back to main menu, and press again to silence the alarm.</p>

### 1.6.3 Menu Diagram



## 1.7 Drive Carrier Module

The Drive Carrier Module houses a 3.5 inch hard disk drive. It is designed for maximum airflow and incorporates a carrier locking mechanism to prevent unauthorized access to the HDD.

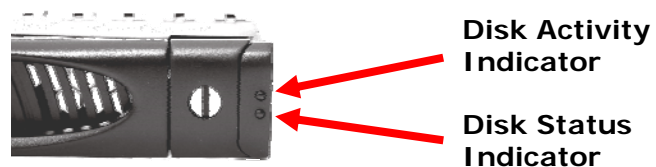


### 1.7.1 Disk Drive Status Indicators

Every Drive Carrier has 2 status indicator lights. One indicator light is used for Power On/Error. When this light is **GREEN** the power is on and everything is functioning normally. When the Power On/Error light is **RED**, then an error has happened that requires the user's attention.

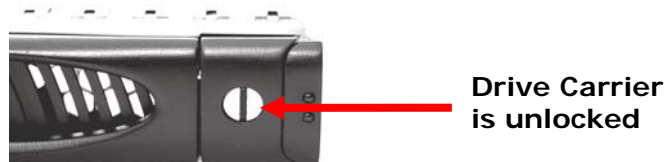
The other status indicator light is the hard disk drive access light. When the hard disk drive is being accessed, this light will flash **BLUE**.

In addition, both indicator lights are viewable within a 170° arc.

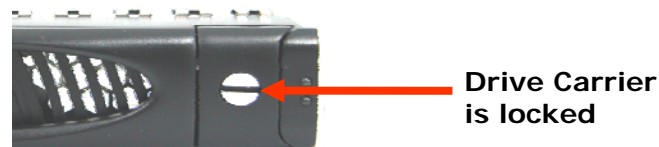


### 1.7.2 Drive Carrier Lock Indicator

Every Drive Carrier is lockable and is fitted with a lock indicator to indicate whether or not the carrier is locked into the chassis or not. Each carrier is also fitted with an ergonomic handle for easy carrier removal.



When the Lock Groove is vertical, then the Drive Carrier is unlocked.



When the Lock Groove is horizontal, this indicates that the Drive Carrier is locked.

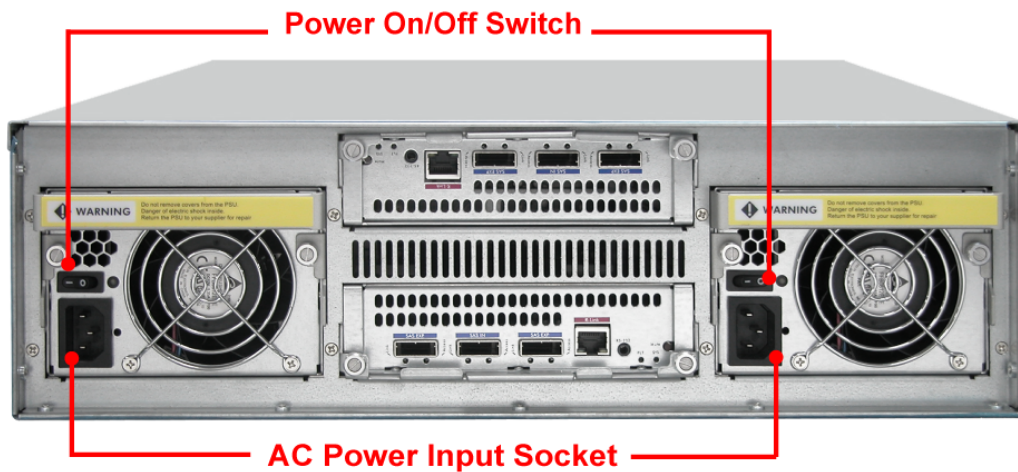
Lock and unlock the Drive Carriers by using a flat-head screw driver.



## Chapter 2 Installation of JBOD Subsystem

### 2.1 Powering On

1. Plug in the power cords into the AC Power Input Socket located at the rear of the subsystem.



**NOTE:** The subsystem is equipped with redundant, full range power supplies with PFC (power factor correction). The system will automatically select voltage.

2. Turn on each Power On/Off Switch to power on the subsystem.
3. The Power LED on the front Panel will turn green.

## 2.2 Disk Drive Installation

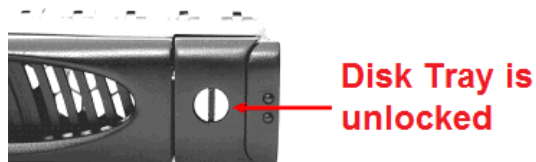
This section describes the physical locations of the hard drives supported by the subsystem and give instructions on installing a hard drive. The subsystem supports hot-swapping allowing you to install or replace a hard drive while the subsystem is running.



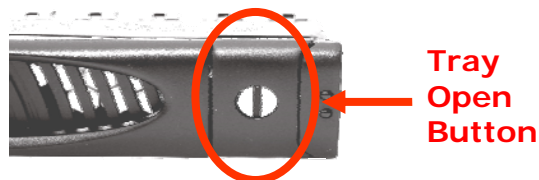
**NOTE:** In this model, it is recommended to use 6Gb hard drive disks.

### 2.2.1 Installing Disk Drive in a Disk Tray

1. Unlock the Disk Trays using a flat-head screw driver by rotating the Lock Groove.



2. Press the Tray Open button and the Disk Tray handle will flip open.



3. Pull out an empty disk tray.



4. Place the hard drive in the disk tray. Turn the disk tray upside down. Align the four screw holes of the SAS disk drive in the four Hole A of the disk tray. To secure the disk drive into the disk tray, tighten four screws on these holes of the disk tray. Note in the picture below where the screws should be placed in the disk tray holes.



**NOTE:** All the disk tray holes are labelled accordingly.

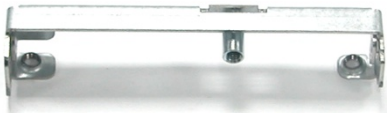


5. Slide the tray into a slot.
6. Press the lever in until you hear the latch click into place. The HDD Fault LED will turn green when the subsystem is powered on and HDD is good.
7. If necessary, lock the Disk Tray by turning the Lock Groove.

## 2.2.2 Installing a SATA Disk Drive (Dual Controller Mode) in a Disk Tray

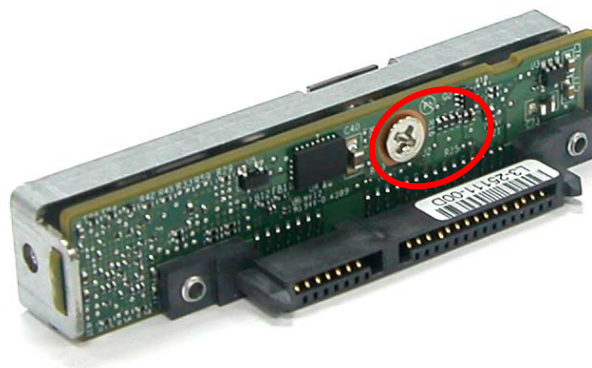
1. Remove an empty disk tray from the subsystem.



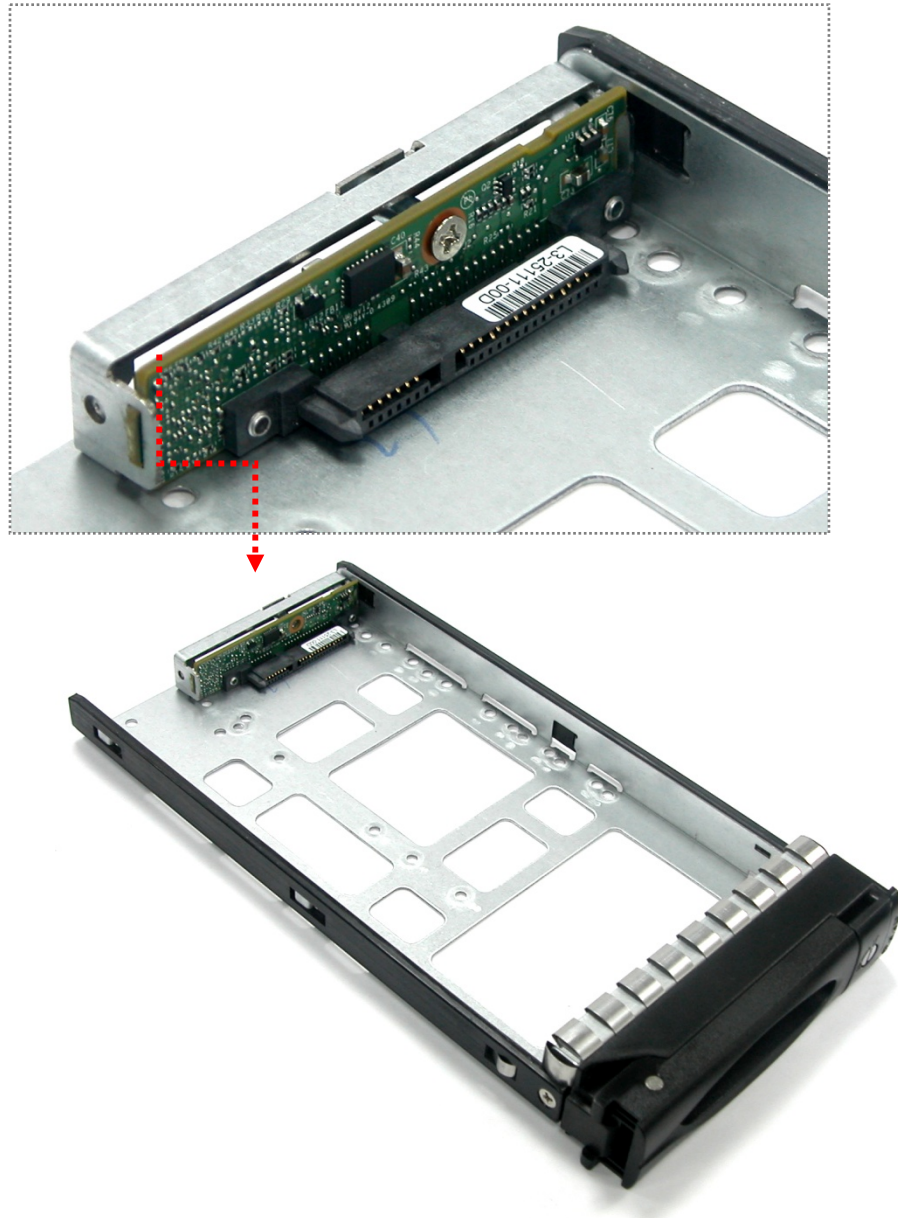
2. Prepare the dongle board, the Fixed Bracket, and screws.

	<b>Fixed Bracket</b>
	<b>Dongle Board</b>
	<b>Screws</b>

3. Attach the dongle board in the Fixed Bracket with a screw.

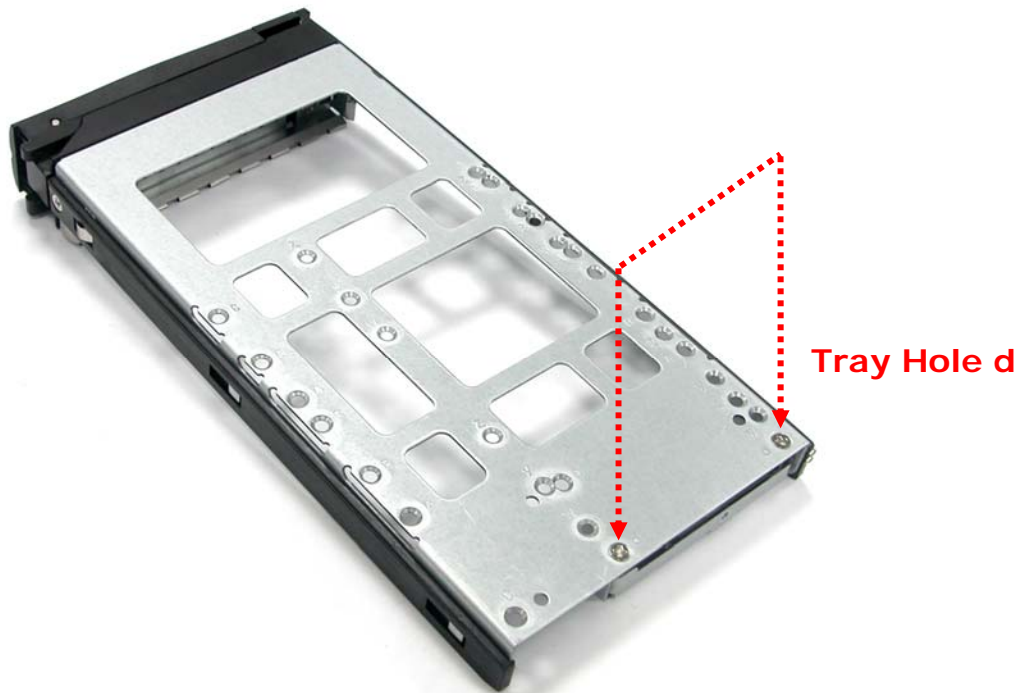


4. Place the Fixed Bracket with the dongle board in the disk tray as shown.





5. Turn the tray upside down. Align the holes of the Fixed Bracket in the two *Hole d* of the disk tray. Tighten two screws to secure the Fixed Bracket into the disk tray.

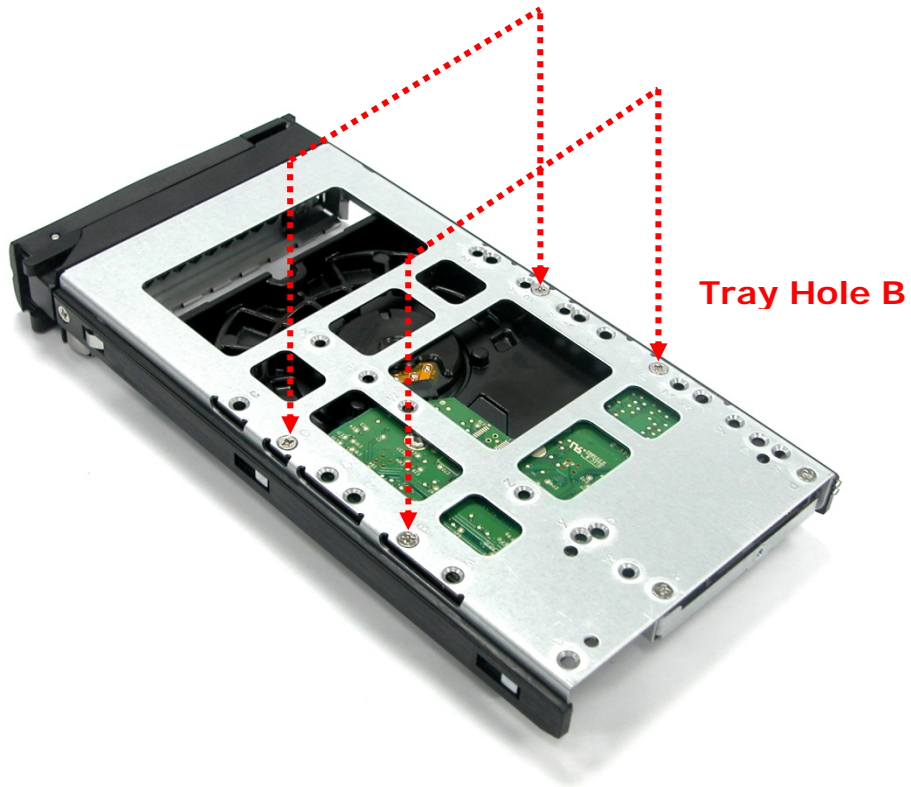


**NOTE: All the disk tray holes are labelled accordingly.**

6. Place the SATA disk drive into the disk tray. Slide the disk drive towards the dongle board.



7. Turn the disk tray upside down. Align the four screw holes of the SATA disk drive in the four *Hole B* of the disk tray. To secure the disk drive into the disk tray, tighten four screws on these holes of the disk tray. Note in the picture below where the screws should be placed in the disk tray holes.



**NOTE: All the disk tray holes are labelled accordingly.**

8. Insert the disk tray into the subsystem.



## 2.3 Connecting the JBOD Subsystem

### 2.3.1 Connecting to SAS HBA

The JBOD Subsystem supports SAS interface which provides fast 600MB data transfer rate using SAS phy. Attach one end of the SAS cable to the SAS IN Port and the other end to the host bus adapter's (HBA) external SAS connector or to the SAS Switch. (The host bus adapter is installed in your Host computer system.)

### 2.3.2 Connecting to RAID Subsystem

Attach one end of the SAS cable to the SAS IN Port of the JBOD controller module and the other end to the SAS Expansion Port on the RAID controller of RAID subsystem. If configured in redundant mode, connect the other SAS cable to the SAS IN Port of the other JBOD controller, and the other end to the SAS Expansion Port on the other RAID controller of RAID subsystem.

## Chapter 3 JBOD Firmware Upgrade

### Upgrading Firmware



**IMPORTANT:** Before upgrade the JBOD firmware, please shut down server first or make sure no array setting on the JBOD disks. The new Firmware will effective after JBOD power cycle.



**NOTE:** Upgrading the firmware must be done from Master JBOD Controller (JBOD Controller 1) if the JBOD Subsystem has redundant JBOD Controllers.

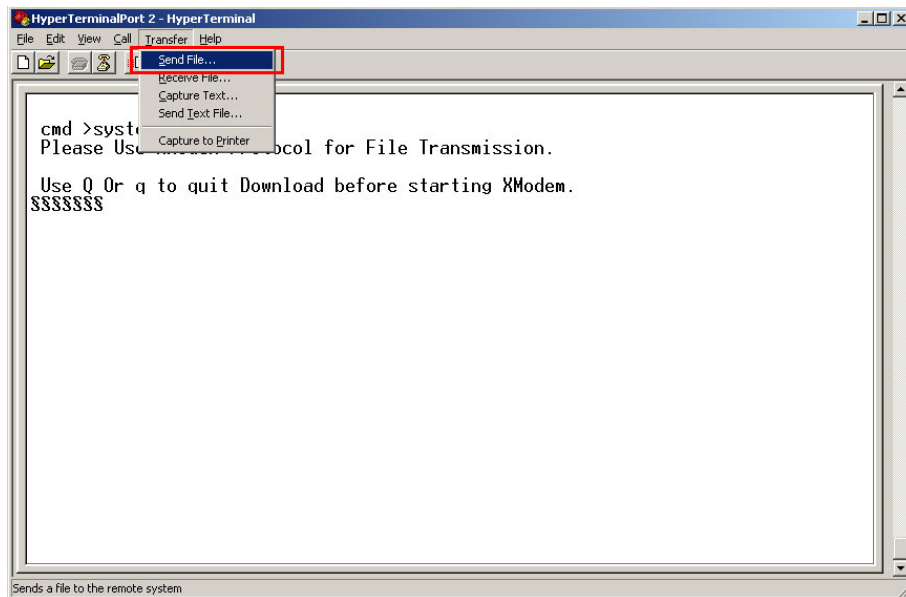
#### Steps:

1. Please use the RS232 cable (Phone jack to DB9) to JBOD Controller #1 and to connect JBOD RS232 Port and PC COM1 Port (or change to other COM Port as necessary).
2. Open Windows HyperTerminal Program. Connect using COM1 (COM Port used in Step1), Baud Rate: 115200, n, 8, 1, Flow Control: None.
3. Please type "system upgrade", than press "Enter" in command line.

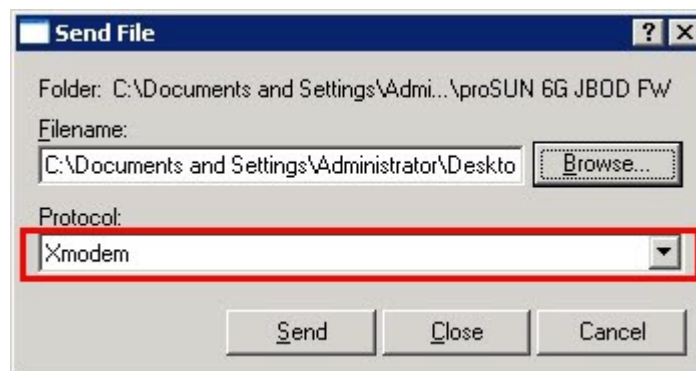
```
cmd >system upgrade
Please Use XModem Protocol for File Transmission.
Use Q Or q to quit Download before starting XModem.
$$$$$$$$$_
```

4. Select Transfer & Send File.

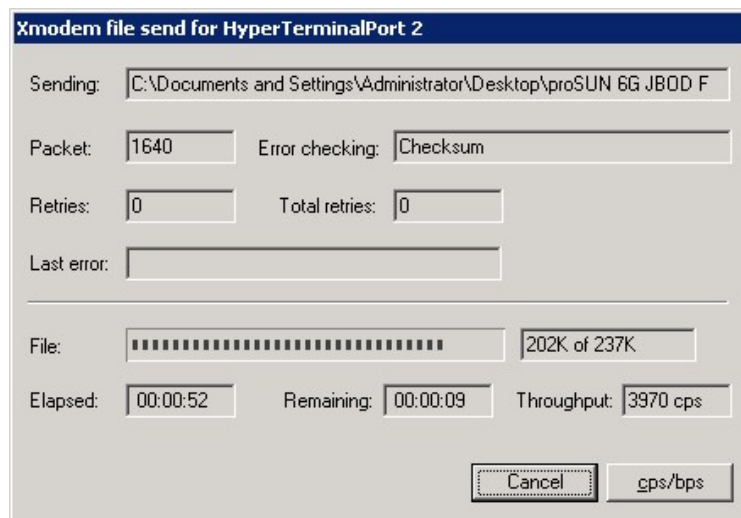
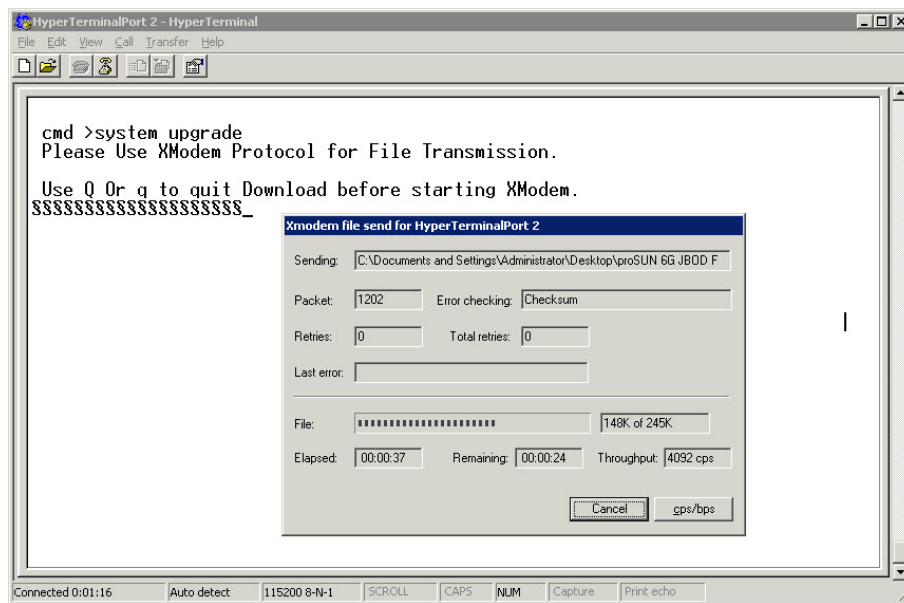
**You must finish within 25 seconds**



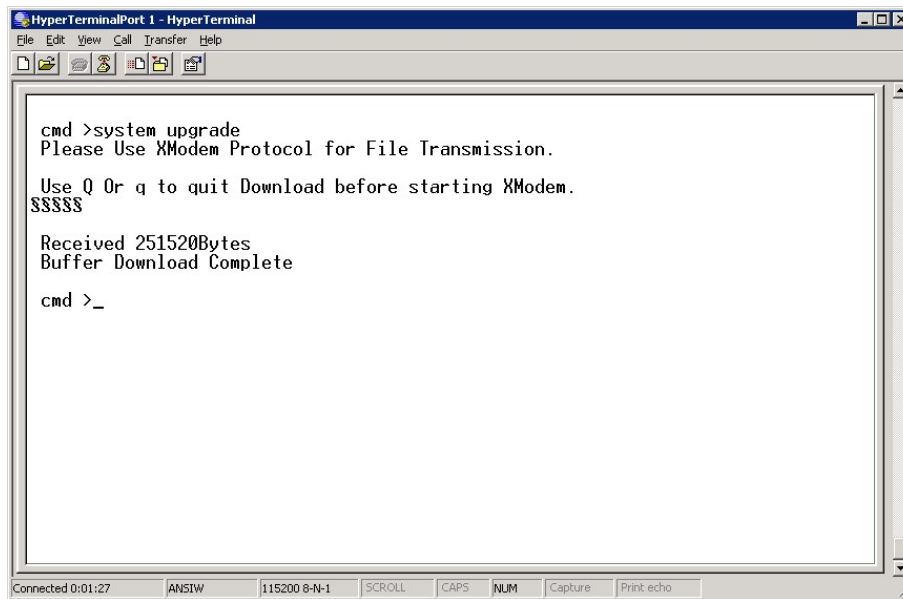
5. Select your firmware file path, and select Xmodem in the communication protocol, and click transfer button.



## 6. Wait for the transfer of file to complete.



7. When the transfer and firmware update is complete, please power cycle the JBOD.



```
HyperTerminalPort1 - HyperTerminal
File Edit View Call Transfer Help

cmd >system upgrade
Please Use XModem Protocol for File Transmission.

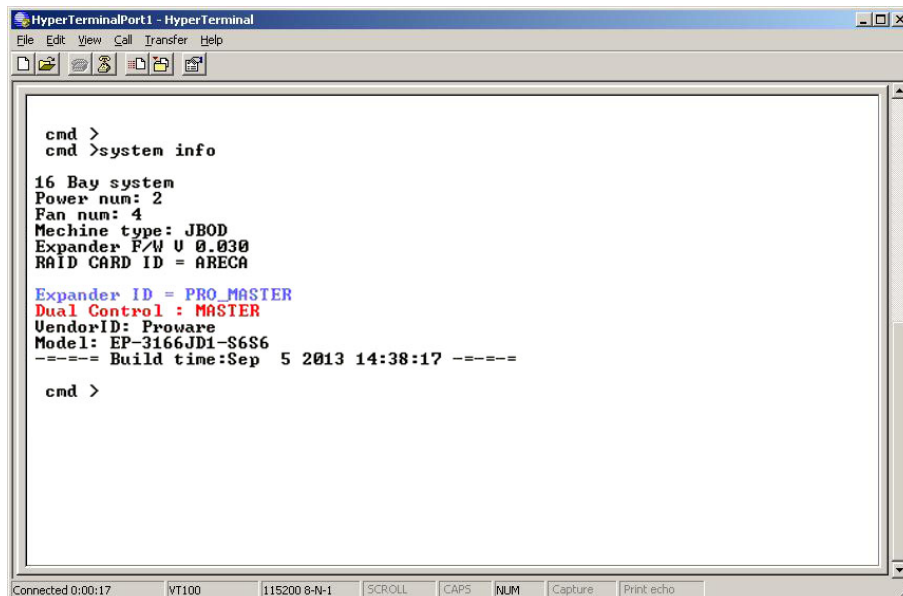
Use Q Or q to quit Download before starting XModem.
SSSSS

Received 251520Bytes
Buffer Download Complete

cmd >_

Connected 0:01:27  ANSLW  115200 8-N-1  SCROLL  CAPS  NUM  Capture  Print echo
```

8. In command line, type "system info", you can see the Expander firmware version.



```
HyperTerminalPort1 - HyperTerminal
File Edit View Call Transfer Help

cmd >
cmd >system info

16 Bay system
Power num: 2
Fan num: 4
Machine type: JBOD
Expander P/W U 0.030
RAID CARD ID = ARECA

Expander ID = PRO_MASTER
Dual Control : MASTER
VendorID: Proware
Model: EP-3166JD1-S6S6
----- Build time:Sep  5 2013 14:38:17 -----

cmd >

Connected 0:00:17  VT100  115200 8-N-1  SCROLL  CAPS  NUM  Capture  Print echo
```