

SB-2124-GIA3

iSCSI-SATA RAID Subsystem



Unparalleled Performance

- Front-end 2 x 1Gb iSCSI
- Supports 802.3ad port trunking, Link Aggregation Control Protocol (LACP)
- High data bandwidth of system architecture by powerful 64-bit RAID processor

Unsurpassed Data Availability

- RAID 6 capability provides the highest level of data protection
- Supports snapshot-on-the-box w/o relying on host software

Exceptional Manageability Menu-driven front panel display

- Management GUI via serial console , SSH telnet, Web and secure web
- Event notification via Email and SNMP trap
- Menu-driven front panel display

Features

- Front-end 2 x 1Gb ports support independent access, fail-over or load-balancing (802.3ad port trunking, LACP)
- Supports iSCSI jumbo frame
- Supports Microsoft Multipath I/O (MPIO)
- Supports RAID levels 0, 1, 0+1, 3, 5, 6, 10, 30, 50, 60 and JBOD
- Local N-way mirror: Extension to RAID 1 level, N copies of the disk
- Global and dedicated hot spare disks
- Write-through or write-back cache policy for different application usage
- Dedicated or shared cache allocation for volume usage
- Supports greater than 2TB per volume set (64-bit LBA support)
- Supports manual or scheduling volume snapshot (up to 32 snapshot)
- Snapshot rollback mechanism
- Online volume migration with no system down-time
- Online volume expansion
- Instant RAID volume availability and background initialization
- Supports S.M.A.R.T, NCQ and OOB Staggered Spin-up capable drives



UNIFOSA CORP.

Tel:886-2-2914-8001(Rep.) Fax:886-2-2914-7975

<http://www.proware.com.tw> E-mail:info@proware.com.tw



Series Technical Specifications

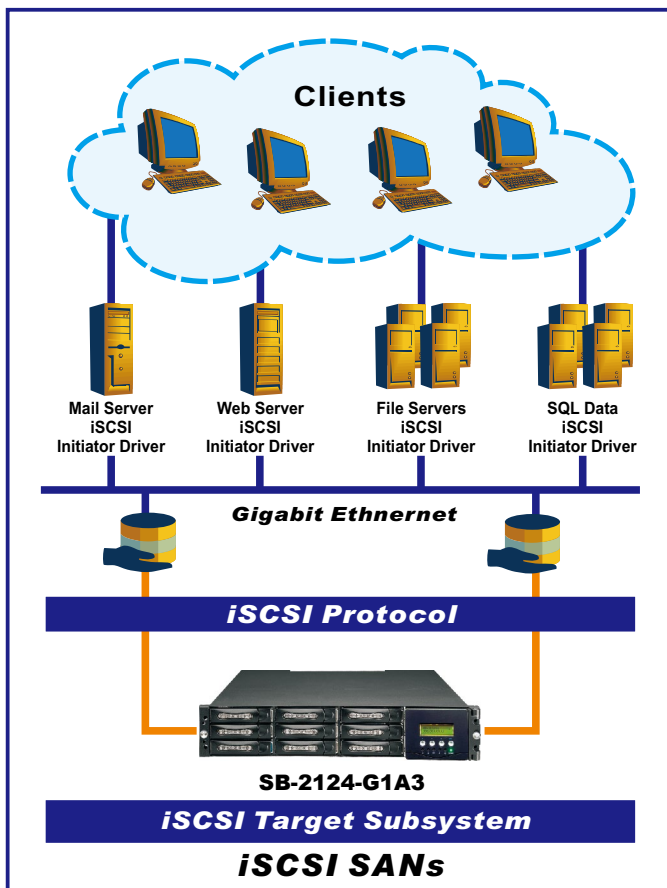


Model Number : SB-2124-G1A3

Form Factor: 2U 19-inch rackmount chassis	Configurable stripe size
RAID processor: Intel IOP341 64-bit	Instant RAID volume availability and background initialization support
RAID Level: 0, 1, 0+1, 3, 5, 6, 10, 30, 50, 60 and JBOD	Supports over 2TB per volume
N-way mirror (N copies of the disk)	Online consistency check
Cache memory: 512MB ~ 2GB DDRII	Bad block auto-remapping
No. of channels (host+drive): 2 + 12	S.M.A.R.T. support
Host bus interface: 1Gb/s Ethernet	New disk insertion / removal detection
Drive bus interface: 3Gb/s SATA II	Auto volume rebuild
Hot-swap drive trays: Twelve (12) 1-inch trays	Array roaming
Host access control: Read-Write & Read-Only	Audible alarm
Supports CHAP authentication	Password protection
802.3ad port trunking, LACP support	UPS connection
Jumbo frame support	Hot-swap power supplies: Two (2) 350W power supplies w/PFC
Maximum logical volume: up to 256	Cooling fans: 2
Maximum host connection: up to 32	Battery backup(Optional)
Maximum host clustering: up to 16 for one logical volume	Power requirements: AC 90V ~ 264V full range 8A ~ 4A, 47Hz ~ 63Hz
Manual/scheduling volume snapshot: up to 32	Environmental
Snapshot rollback mechanism support	Relative Humidity: 10% ~ 85% Non-condensing
Supports Microsoft Multipath I/O (MPIO)	Operating Temp: 10oC ~ 40oC (50oF ~ 104oF)
Global/dedicated cache configurable by volume	Physical Dimensions: 88(H) x 482(W) x 650(D)mm
Global and dedicated hot spare disks	Weight: 13.5 kgs
Online Volume migration	
Online Volume sets expansion	

Specification are subject to change without notice.

All company and product names are trademarks of their respective owners.



Advantages of iSCSI

- * Familiar network technology and management
 - Reduces training and staff costs.
- * Proven transport infrastructure
 - Increases reliability.
- * Transition from 1Gigabit Ethernet to 10 Gigabit Ethernet and Beyond
 - Protects investment with simplified performance upgrades Scalability over long distances.
 - Enables remote data replication and disaster recovery.
- * Brings Ethernet economics to storage
 - Enables lower total cost of ownership(TCO).
- * **Consolidation** : iSCSI delivers seamless expandability. automatic load balancing, automatic storage provision, disaster recovery etc..
- * **Virtualization**
 - Scalable, highly available pool of storage.
 - Storage allocation and resizing on-demand.
 - Centralized management with remote access.
 - Security that protects logical volumes from unauthorized access.
 - Snapshot and replication.
 - Volume mirroring.
 - Multi-Path host access.