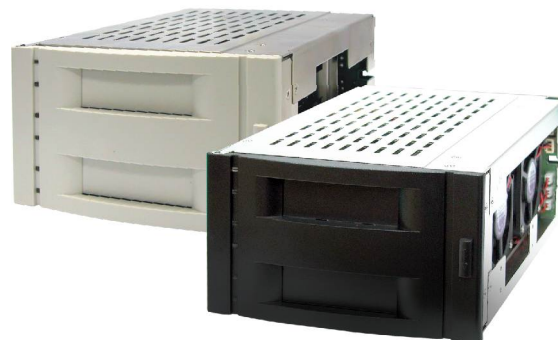


## DF-7506

**1-to-2 Intelligent  
SATA II Internal RAID Solution**



### Fault Tolerance

- ◆ DataFree support RAID level 0, 1, SAFE33 and SAFE50 safeguarding your valuable assets from loss due to HDD failure or system crash.

### Easy Installation and Manageability

- ◆ Non driver adding internal disk storage to a PC, workstation or network servers.
- ◆ Easy to use automatic RAID mode configuration.
- ◆ No occupies PCI bus slot or extra system resources.

### User Friendly

- ◆ DataFree is equipped with front panel LED indicators providing immediate visual status to the user.
- ◆ Provides windows-based GUI utility for management, configuration and monitoring.

### Secure

- ◆ DataFree is a reliable solution that provides enhanced data protection.

### Technical Specification

<b>Form-factor</b>	Full height 5.25"
<b>Operation Modes</b>	FAST(RAID 0), SAFE(RAID 1), JBOD, BIG, SAFE33, SAFE50
<b>Host / Disk bus interface</b>	SATA II 3Gb
<b>Data transfer rate</b>	Up to 3Gb/s
<b>Hot-swap drive trays</b>	Two (2) 3.5 inch trays
<b>Cooling fan</b>	1
<b>Security lock</b>	Yes
<b>Audible alarm</b>	Yes
<b>Failed drive indicator</b>	Yes
<b>Continuous Rebuild</b>	Yes
<b>GUI RAID manager</b>	Yes
<b>Email Notification</b>	Yes
<b>Relative Humidity</b>	10% ~ 85% Non-condensing
<b>Operating Temp</b>	10°C ~ 40°C (50°F ~ 104°F)
<b>Physical Dimensions</b>	85.3(H) x 149(W) x 223(D) mm
<b>Weight</b>	1.9kgs (without drives)

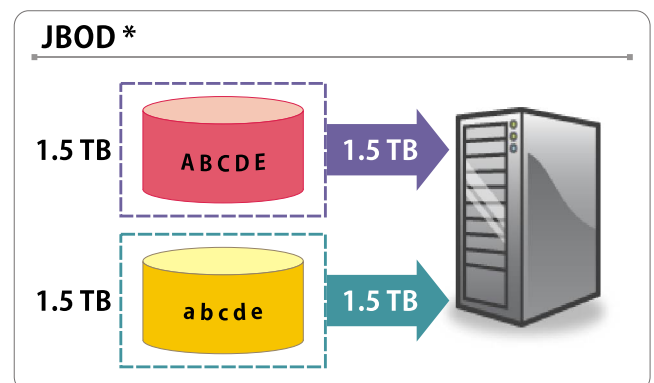
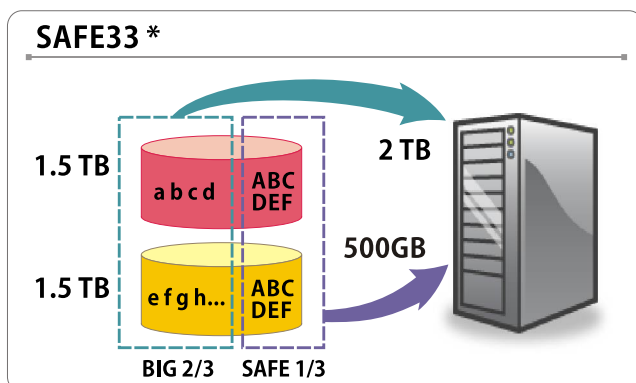
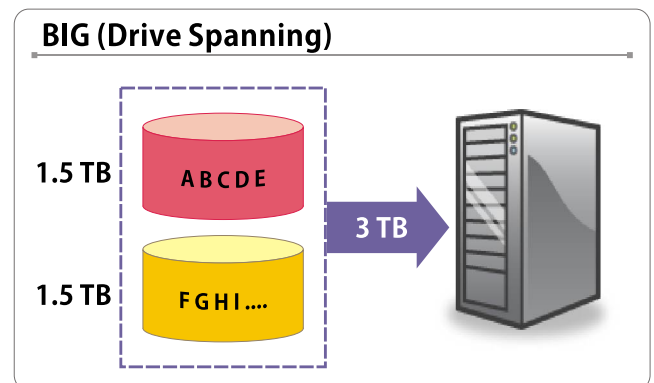
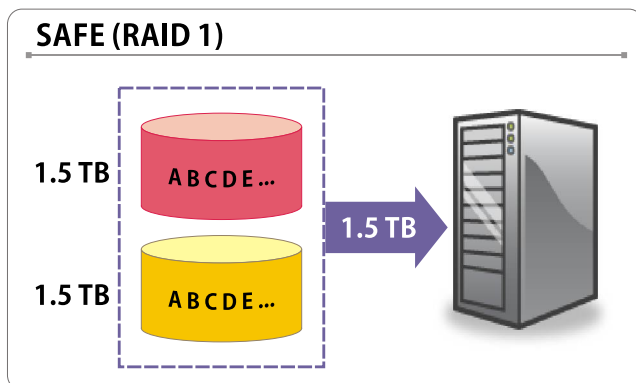
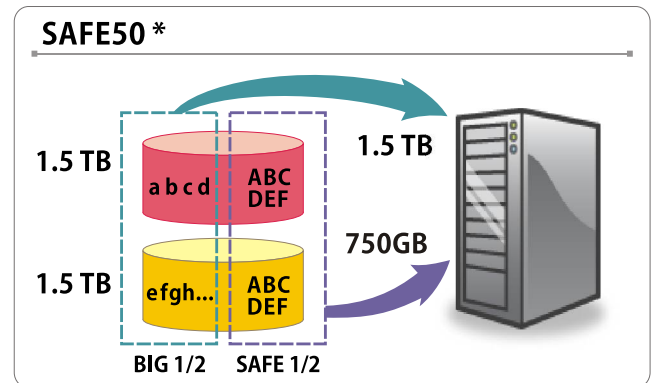
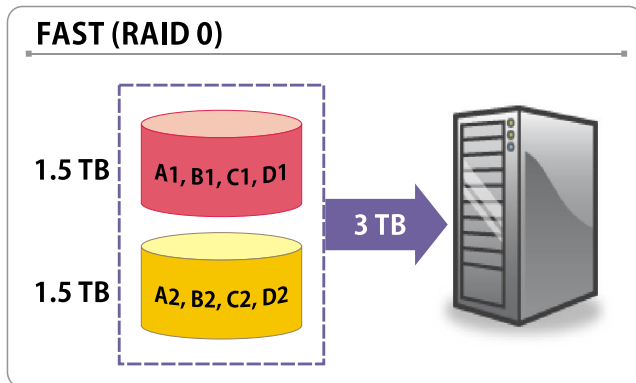
Specification are subject to change without notice. All company and product names are trademarks of their respective owners.

# Series Technical Specifications



## Operation Modes

FAST (RAID 0)	Allows the device to perform striping which enables the drives to provide maximum throughput.
SAFE (RAID 1)	Allow device to automatically copy primary hard drive without any performance overhead on the CPU
SAFE33 *	Creates two virtual volumes, one SAFE (RAID 1) volume (1/3 capacity) and one BIG volume (2/3 capacity)
SAFE50 *	Creates two virtual volumes, one SAFE (RAID 1) volume (1/2 capacity) and one BIG volume (1/2 capacity)
BIG (Drive Spanning)	Concatenates the physical hard drives as a single large volume with larger capacity
JBOD *	Enables each hard drive to be seen separately as individual drive.



\* SATA HBA must have supporting Port Multiplier in this mode.